

CERTIFICATE OF LOCATION OF GOVERNMENT CORNER

NORTH QUARTER

Corner of Section 19

, Township 106N

, Range 41W

5th Principal Meridian, State of Minnesota, County of Murray.

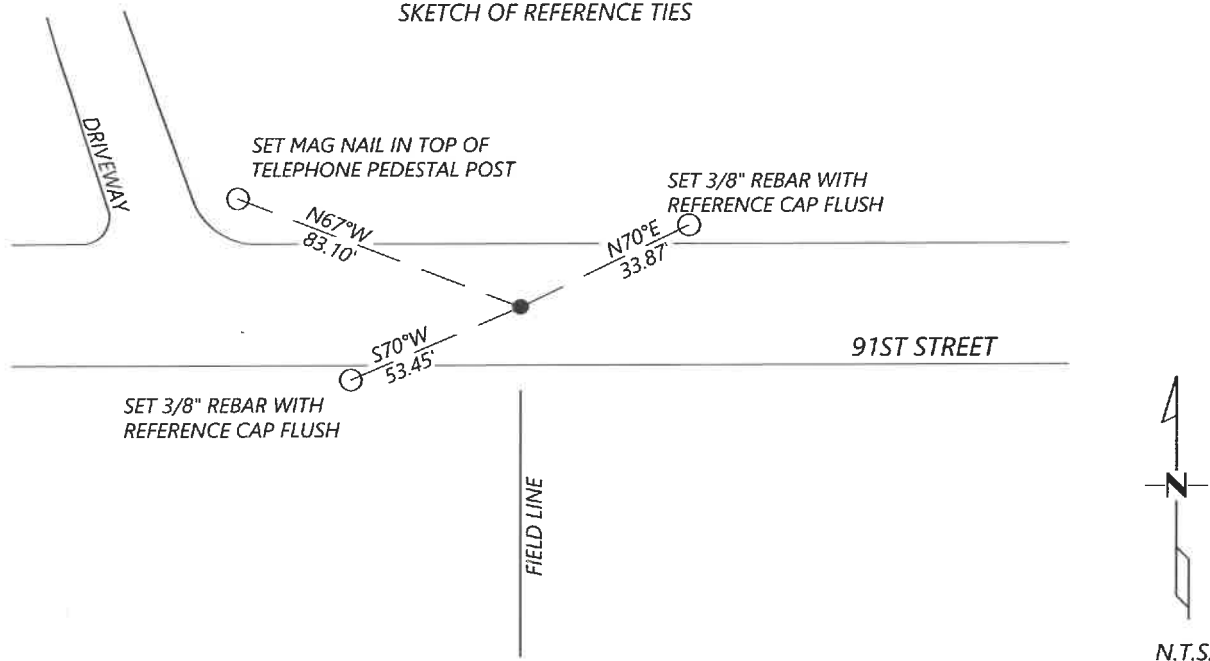
At the corner location shown on the sketch:

☐ On _____ found a _____
DATE

☐ left monument as found ☐ lowered monument ☐ removed monument (explain)

☒ On 11/08/2021 placed a NO.4 REBAR CAPPED "RLS 57085". SEE STATEMENT OF EVIDENCE FOR METHOD.
DATE

SKETCH OF REFERENCE TIES



Statement of evidence for this corner location is on back of this page.

I hereby certify that this document was researched and prepared by me or under my direct supervision and that I am a licensed Land Surveyor under the laws of the State of Minnesota.

Signature *Jeff Weber*Date 4-19-2022 License No. 57085

Title:

☒ Land Surveyor ☐ Professional Engineer
☐ County Surveyor ☐ County Engineer

OFFICE OF THE COUNTY RECORDER

County of Murray

I hereby certify that this
document was filed in the Co.

Recorder's office at _____ M. on the
22nd day of April A.D. 20 22

County Recorder *Karen Brown*
by _____, Deputy

DOCUMENT NO. _____

SETH WECKMAN
Minnesota License No. 57085

Statement of Evidence:

North Quarter corner of Section 19, Township 106 North, Range 41 West, 5th Principal Meridian, Murray County, Minnesota.

1861 L.G.M. Fletcher, U.S. Deputy Surveyor, during the original public land survey a post was set for the corner and built a mound with trenches, pits, and charred stake.

1901 J.W. Woolstencroft, survey shows 10x14x20 grey stone. (stake marked by previous survey)

2021 Westwood Professional Services searched the area and did not recover a monument. Lines of occupation consists of an East/West gravel road and a field line to the South. The field crew hand excavated for the grey stone that was referenced in 1901 but did not recover anything. After analysis of field measurements, it was determined that the best position for the corner is proportionally by using the 1901 survey between the NE and NW corners of Section 19. This position agrees with the field line to the South. A No. 4 rebar was set with a cap marked "RLS 57085" and established 3 reference ties

Analysis of the recovered data, field evidence and survey measurements, indicates that the monument set is the correct perpetuation of this corner. For additional information concerning this corner please contact Westwood Professional Services.